

S45 capacitive liquid level switch

Technical data

The **Model S45** is an active device which is designed to give an alarm signal if fluid falls below a preset level. It will only signal an alarm after a few seconds of low level to eliminate false alarms due to turbulence. The fact that the **Model S45** has no moving parts and incorporates a built in delay means it is ideal in applications where mechanically operated switches mis-trigger due to vibration and fluid turbulence.

Specification

Electrical Rating

Supply Voltage: 7 - 40 VDC
 Supply Current: 3.0mA
 Max. Load Current: 1.0A
 Alarm Delay Time: 10.0 Seconds

Fluid Types

Water based fluids compatible with Brass, PTFE and EPDM

Environmental Ratings

Max. pressure: 5.0 Bar (72 psi)
 Temp. ranges: Fluid: -40°C to +130°C
 Ambient: -40°C to +130°C
 Storage: -50°C to +140°C



Connections

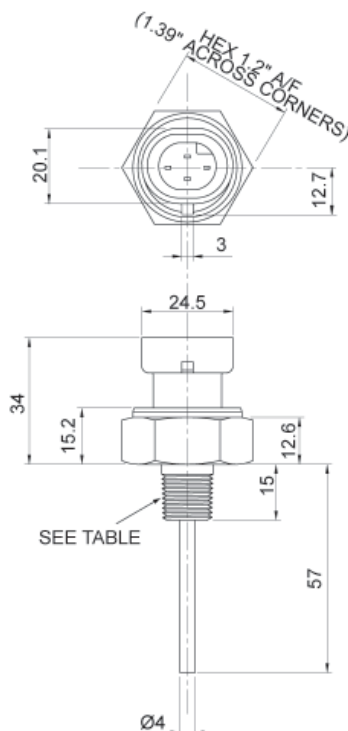
V+: Positive Power Supply
 GND: Negative Power Supply or GND
 Output: Transistor switched to GND on alarm
 Test: Ground to operate
 Body: Not connected

Construction

Body: Brass
 Probe: PTFE
 Terminals: SAE CA210Brass, Tin Plated
 Seals: EPDM
 Connector: 30% Glass Filled Nylon 6
 Thread: Polyacrylate Aqueous Emulsion Base (Dri-Seal 5061)
 Sealant: 5061)

Sealing: IP67
 Vibration: 6g 10-50Hz (600-3000rpm)
 Shock: 50g, 6.3ms
 Weight: 53g

Note: Torque setting on installation should not exceed 28Nm. Unit should be tightened with a 31mm ring spanner or 31mm socket.



Options	Output switch condition (Liquid level OK)	
	Open	Closed
1/4" NPTF	S45/03	S45/13
1/2" BSPT	S45/04	S45/14
1/2" NPTF	S45/05	S45/15

Optional accessories:

Mating connector kit to suit harness wire cross sectional area of 0.8 to 1.0mm² and sleeve Ø1.60 to 2.15mm:

Our Part no	Description
C/K1	Connector kit comprising of: Crimp Terminals (x4) Cable seals (x4) Cavity plug (x1) Connector assembly 4 way (x1) TPA lock (x1)

Pressure Vacuum Level Ltd

Tel: +44(0)1892 664499 Fax: +44(0)1892 663690 E-mail: sales@pvl.co.uk Website: www.pvl.co.uk