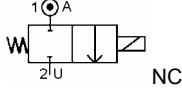


Media: air – water – gas – light oil - vacuum
 Pressure range: 0 to 40 bar max
 Media temperature: 120° C max
 Ambient temperature: -10° to +50° C max
 Media viscosity: 40 centistokes max
 Mounting: any position
 Weight (including coil) 280 g
 Opening / Closing time: 20 mSec Max



2/2 Stainless

N/CLOSED

2 WAY DIRECT ACTING



TYPE JA

PRESSURE

Ø Port	Ø Orifice (mm)	Flow Rate Cv Ltr/Min	Pressure Rating (bar)				Seals	Max Media Temp °C	Part Number	List Price	
			Min ΔP	10 watt Coil		14 Watt Coil					
				Max ΔP AC	Max ΔP DC	Max ΔP AC					Max ΔP DC
1/8 BSP or 1/4 BSP	1.2	0.8	0	30	20	40	30	NBR EPDM FKM	50 120 80	JA + port + AN + voltage + watts JA + port + AE + voltage + watts JA + port + AV + voltage + watts	£43.83
	1.6	1.6	0	20	15	30	20	NBR EPDM FKM	50 120 80	JA + port + BN + voltage + watts JA + port + BE + voltage + watts JA + port + BV + voltage + watts	
	2.4	2	0	10	9	20	15	NBR EPDM FKM	50 120 80	JA + port + CN + voltage + watts JA + port + CE + voltage + watts JA + port + CV + voltage + watts	
	3.2	2.8	0	7	6	15	10	NBR EPDM FKM	50 120 80	JA + port + DN + voltage + watts JA + port + DE + voltage + watts JA + port + DV + voltage + watts	
1/4 BSP	4	4	0	5	4	10	8	NBR EPDM FKM	50 120 80	JA + port + EN + voltage + watts JA + port + EE + voltage + watts JA + port + EV + voltage + watts	
	5	7.1	0	4	3	6	5	NBR EPDM FKM	50 120 80	JA1/4FN + voltage + watts JA1/4FE + voltage + watts JA1/4FV + voltage + watts	

OPTIONS

Connector PG9 – DIN 43650 A
 IP65 F rated (155°C) Coil
 NPT and BSPT Thread
 T36 High Power 14 – 20 Watt coil

Included
 Included
 +10%
 +£5.27

ELECTRICAL DATA

Voltage (-10% + 15%) Continuous duty 100%	Coil Size	Power		Insulation class	Enclosure	Electrical connections
		Inrush	Holding			
~ 24 - 48 - 110 - 230 - 415 (50 or 60 Hz)	30	26 VA	14 VA	F 155°C	IP 65 with connector	3 spades DIN 43650 DIN 40050 VDE 0110
= 12 - 24 - 48 (DC)		10 Watts				
~ 24 - 48 - 110 - 230 - 415 (50 or 60 Hz)	36	48VA	26VA			
= 12 - 24 - 48 - 80 - 190 (DC)		14 - 20 Watts				

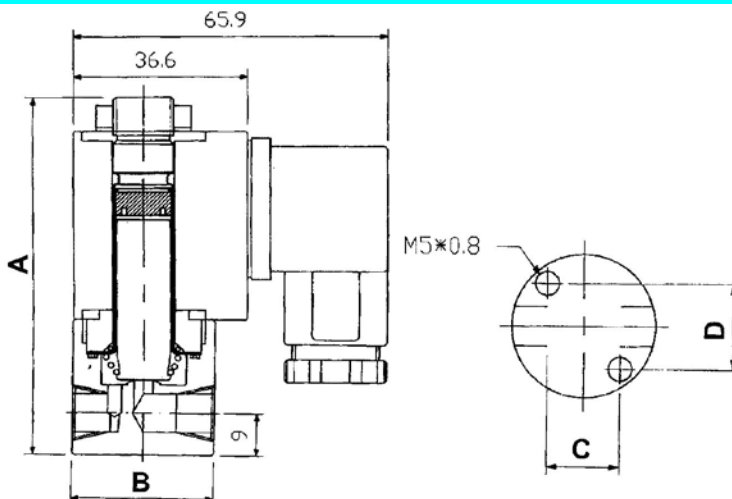
CONSTRUCTION

Body: AISI303 Stainless steel
 Tube and internal parts: AISI304 stainless steel
 Head & plunger: AISI 430Fr Stainless steel
 Seals and gaskets: FKM (Optional EPDM & NBR)
 Moulded coil: Resin

REPAIR KIT

Coil	Coil size (30 or 36) + voltage
Complete plunger + O' rings	KIT + valve part number

OVERALL DIMENSIONS



Port	A	B	C	D
1/8	76	30	15.2	17.8
1/4	77	35	16	22



PTFE Seats
 SUS316
 Page 73