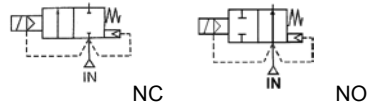


Media: Air, Water, Steam or light oil  
 Pressure range: 0.3 to 16 bar max  
 Media temperature: -5°C to +200°C  
 Ambient temperature: 0° to +60°C  
 Media viscosity: 50 centistokes max  
 Cycle life: 500,000 cycles  
 Opening / Closing Time: 3–5 Sec



# 2/2 Bronze

## Steam

### N/CLOSED & N/OPEN

### 2 WAY SERVO ASSISTED

## TYPE BFEB



#### PRESSURE

Ø Port PN16	Ø Orifice (mm)	Flow Rate Cv Ltr/Min	Pressure		Part Number	List Price		
			Min ΔP	Max ΔP		Cast Iron FC 20	Ductile Iron Epoxy Coated	Bronze
2"	50	1250	0.3	16	BFE50 + body + seal + voltage	£404.53	£475.59	£629.63
2 1/2"	65	1750	0.3	16	BFE65 + body + seal + voltage	£497.46	£609.53	£831.69
3"	80	2300	0.3	16	BFE80 + body + seal + voltage	£582.19	£754.39	£1030.83
4"	100	4300	0.3	16	BFE100 + body + seal + voltage	£718.86	£975.79	£1216.32
6"	150	9100	0.3	16	BFE150 + body + seal + voltage	£1306.52	£1672.78	£2391.64
8"	200	16700	0.3	16	BFE200 + body + seal + voltage	£2943.76	£3539.62	£5616.93
10"	250	26500	0.3	16	BFE250 + body + seal + voltage	£5977.73	£6562.65	£7161.33
12"	300	36500	0.3	16	BFE300 + body + seal + voltage	£8776.63	£9364.28	£10359.33

#### OPTIONS

Connector PG9 – DIN 43650 A	<b>Included Included +£43.73 +£38.27 TBA TBA</b>
Manual Over ride lever valve	
Special FKM seals 200°C rated steam or PTFE	
Normally Open version	
Larger castings up to 16" PN16 500mm	
Explosion Proof Enclosure ATEX II 2 G/D EexdIICT6 or EExmIIT4 ATEX 2G IP65 T 130°C	

#### ELECTRICAL DATA

Voltage (-10% +10%) Continuous Duty 100%	Coil Size	Power		Insulation Class	Enclosure	Electrical Connections
		Inrush	Holding			
~ 24 – 110 – 230 (50 or 60 Hz)	M17	43 VA	26 VA	N 200°C	IP65 with connector	3 spades DIN 43650A
= 12 - 24		19 Watts				

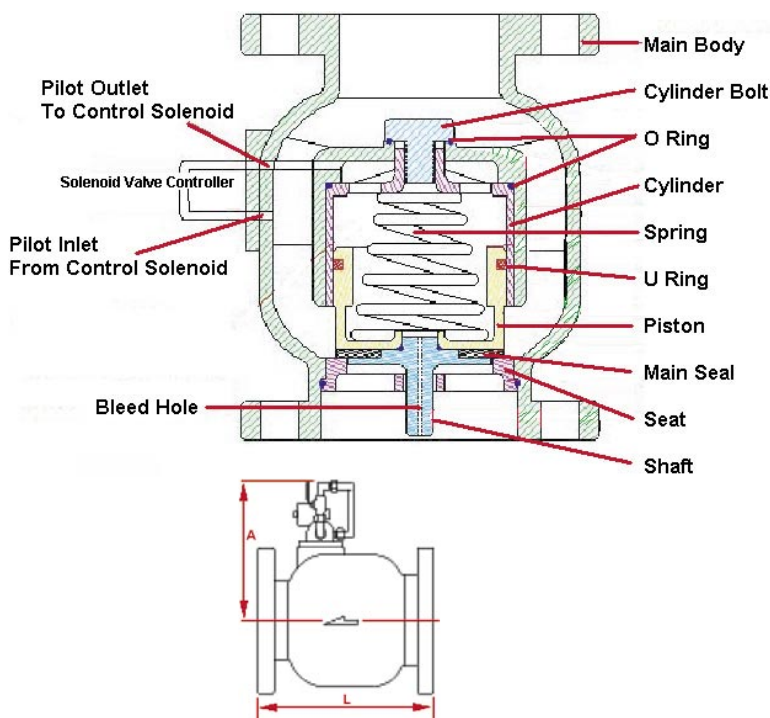
#### CONSTRUCTION

Body & Piston: Cast Iron FC20 or Ductile Iron Epoxy coated or Bronze (100% Pressure tested to 21 bar)  
 Seat & Shaft: Bronze  
 Bolts: Brass  
 Spring: Stainless steel  
 Ports: Flanged PN16 RF ( or BSPP 3" only)  
 Seals and gaskets: FKM (Suitable for steam 200°C), NBR or PTFE  
 Control pipe work circuit & fittings: Copper & Brass

#### REPAIR KIT

Seal Kit	KIT + valve part number
2 way Solenoid valve	MD15S-M17 + voltage

#### OVERALL DIMENSIONS



Port	L	A	Kg
3" BSP	235	200	15
2"	190	187	12
2 1/2"	210	192	15
3"	225	210	18
4"	250	222	24
6"	310	260	44
8"	420	300	87
10"	470	335	152
12"	530	370	202

