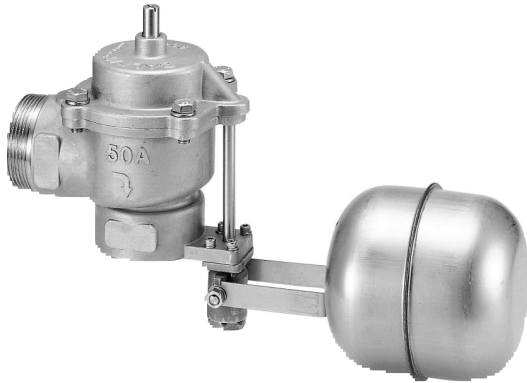


# BALEM 531

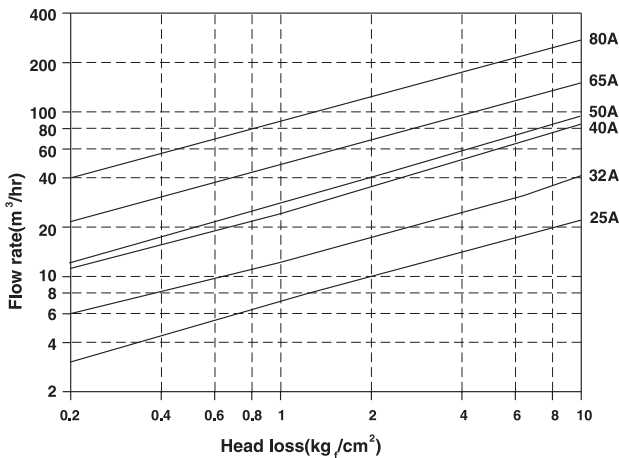


## ► Special Features

- Operates hydraulically independent of any external power sources and is easy to install without additional pipes
- Low risks of malfunction due to its unique inlet filter
- Complete stainless steel construction for demineralized water
- Ideal for installations where high pressure flow is instantly required
- Fitted with an adjustable flow limiter on its bonnet

Balem 531 is a float pilot operated hydraulic level control valve. It is entirely manufactured stainless, such as chemical, and semi-conductor factories. It has many features such as total independence from external power source due to its compact hydraulic/mechanical construction, and pilot valve. The valve has a flow-control shaft fitted on the bonnet. The valve has excellent service life due to its piston operation and the absence of diaphragms that may rupture. At the same time, it has its own filter inside the valve in order to prevent malfunctioning caused by foreign bodies.

## ► Flow-rate Chart



## ► Specifications

BALEM 531						
Model No.	531-025	521-032	531-040	531-050	531-065	531-080
Size	25A (1")	32A (1 1/4")	40A (1 1/2")	50A (2")	65A (2 1/2")	80A (3")
Operating Pressure	0.2 ~ 10kg/cm <sup>2</sup>					
End Connections	Male threaded : KSPT / N.P.T Flanged(Optional)					
Media	Water, Oil Temperature : 0°C ~ 80°C					
Weight	1.7kg	2.1kg	2.5kg	3.0kg	4.7kg	6.5kg

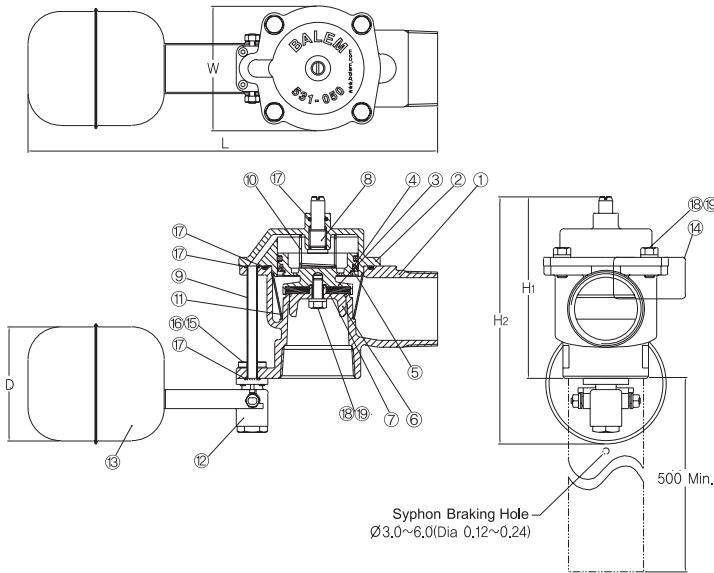
## ► Patents

- Korea Patent No. 0207682

## ► Applications

- As a replacement for under ground/roof top, low water level tanks ball type float valve.
- Substitute for high and low levels control mechanical valves and electrodes.
- Various types of oil tank float control valves.
- Demineralized water and quarantine for semiconductors, electronics, and processing areas.

► Dimensions

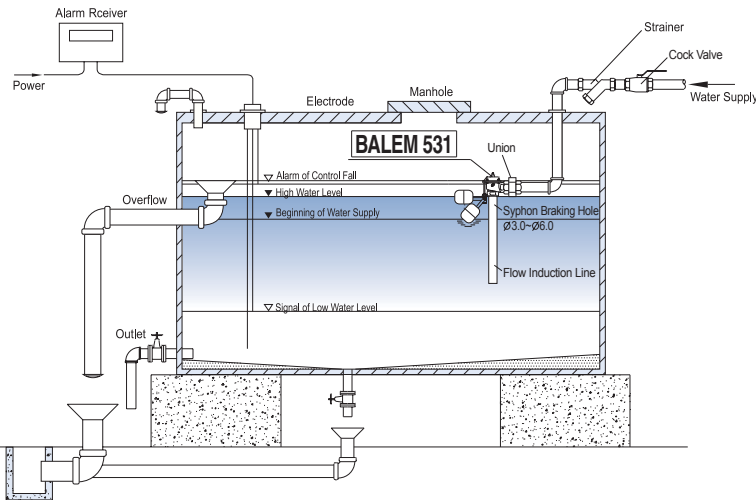


(mm)

Size	Model	H1	H2	W(φ)	L	D(φ)
25A	531-025	101.0	150.0	75.0	292.0	110
32A	531-032	119.0	169.0	82.0	304.0	
40A	531-040	139.0	188.0	88.0	310.0	
50A	531-050	144.0	196.0	99.0	335.0	
65A	531-065	172.0	224.0	115.0	356.0	
80A	531-080	202.0	254.0	130.0	373.0	

► Materials

Item No.	Descriptions	Materials
1	Body	Stainless Steel
2	Cover	Stainless Steel
3	Piston	Stainless Steel
4	Piston Ring	P.T.F.E
5	Snap Ring	Stainless Steel
6	Piston Guide	Stainless Steel
7	Disk Seal	N.B.R
8	Control Shaft	Stainless Steel
9	Pilot Tube	Stainless Steel
10	Coil Spring	Stainless Steel
11	Strainer	Stainless Steel
12	Pilot Valve Assy.	Stainless Steel
13	Floating Ball Assy.	Stainless Steel
14	Name Plate	Stainless Steel
15	Bolt	Stainless Steel
16	Spring Washer	Stainless Steel
17	O-Ring	N.B.R
18	Bolt	Stainless Steel
19	Spring Washer	Stainless Steel



Standard Piping Diagram

► Installation

1. Refer to the standard piping diagram when installing the valve.
2. Install near a manhole, install a union for ease of maintenance, repair, and servicing.
3. Before installation, finish to clean pipeline.
4. A receiver alarm system needs to be installed in monitoring room for early detection of malfunction.
5. To prevent waves while filling, an induction tube with syphon braking hole must be installed.
6. The water level sensor must be placed in the following order ;
  - low water level(pump start)
  - high water level(pump stop)
  - warning water level(alarm control fail)
  - emergency stop(closing pilot valve)