

T/LL130 series fuel level sensor

Technical data

The **Model T/LL130** series is designed for use in water, coolant or fuel/oil tanks and provides a variable resistive or voltage output suitable for driving industry standard fuel gauges or connecting into plcs.

The device has no moving parts and can be mounted at any angle as long as it covers the whole depth of the tank.

Specification

Dimensions:

Probe length: Min 200mm, Max 1000mm

Electrical:

Supply voltage:	7-35Vdc	Supply current:	15mA@12Vdc approx
Operating frequency:	8.3kHz	Output signal:	Factory set resistance range Factory set between 0 and 5V
Load impedance:	100 - 10,000Ω	Linearity:	1%
Warning output:	On... 1/8 tank as default	Accuracy:	±2.5%
Connections:	4 way Delphi Packard connector		

Construction:

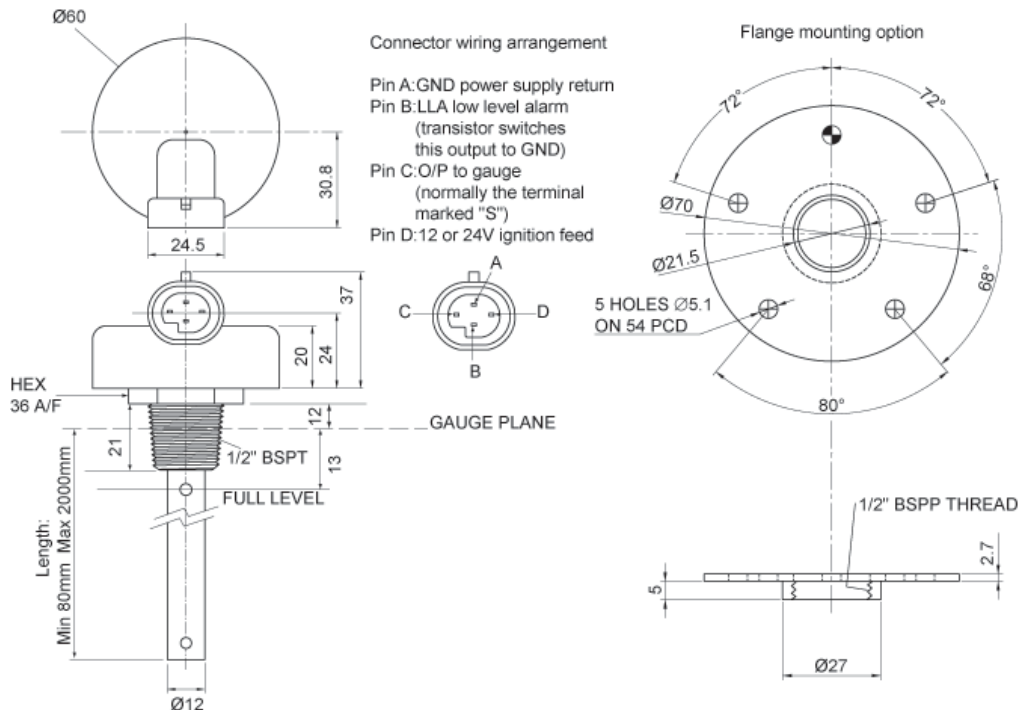
Housing:	30% glass filled Nylon 6	Internal sensor:	PTFE covered stainless steel
Sensor tube:	Stainless steel 316	Seals:	Fluorosilicone rubber
Internal insulators:	30% glass filled Nylon 6		

Fluid Types:

Fluids compatible with 316 St/St, Nylon 6 & Fluorosilicone rubber

Environmental Ratings:

Temperature - operating:	-40°C to +85°C	Sealing:	IP67
- storage:	-55°C to +100°C	Shock:	50g 6.3ms
Vibration:	1.5mm 10-57Hz (600 to 3420 RPM)	Max tank pressure:	2.0 bar [29 psi]



Pressure Vacuum Level Ltd

Tel: +44 (0)1892 664499 Fax: +44 (0)1892 663690 E-mail: sales@pvl.co.uk Website: www.pvl.co.uk