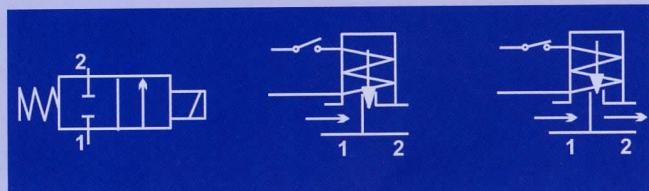


# NORMALLY CLOSED VALVE BODIES DIRECT OPERATION

Solenoid valves suitable for water, air, oil, inert gases and other fluids, which are non-corrosive for copper alloys with a viscosity up to 2° Engler

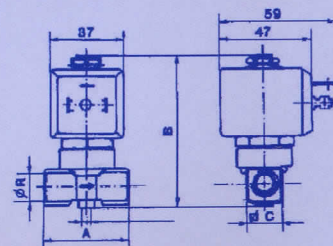
## INSTALLATION AND OPERATION

- > Normally-closed 2 way valve
- > Direct activation
- > Female end connections, size 1/4" to 1" BSP
- > Energized coil opens the plug.



## ELECTRICAL SPECIFICATIONS

- > Closing time : 10 msec.
- > Press-forged brass body
- > Internal parts in stainless steel ( 17 % CR )
- > Gaskets in Viton ( fluoroelastomer )
- > Fluid temperature : -10 to +140 C°
- > With dc coil indicated pressure values must be reduced by 60%



## MAGNETS

- > Actuator coils are supplied separately, see Coils page for voltage selection and technical data

TYPE	A	B	C
20B	40	74	17
20C	53	78.5	26
20D	53	78.5	26
20E	60	94	52
20F	65	103	52

Dimensions and weights are inclusive of coil

TYPE	Through bore dia. Ø mm	Female connection BSP	Kv m³/h	Minimum differential pressure bar	Maximum differential pressure with coil Vn bar	Test pressure (DIN2401) PN bar	Working Temperature °C	Unit Weight Kg
20B	3	1/4"	0.27	0	16	25	-10 to 140	0.34
20C	5	3/8"	0.612	0	6	25	-10 to 140	0.40
20D	5	1/2"	0.612	0	6	25	-10 to 140	0.36
20E	7	3/4"	1	0	2.5	25	-10 to 140	0.70
20F	9	1"	1.2	0	2.5	25	-10 to 140	0.90

Kv = water flow in m³/h with pressure drop of 1 bar (1 bar = 100kPa)  
For dual-frequency coils when used at 60 Hz given values must be reduced by approx. 12%