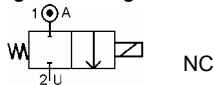


Media: air – water – gas – light oil - vacuum
 Pressure range: 0 to 100 bar max
 Media temperature: 100° C max
 Ambient temperature: -10° to +50° C max
 Media viscosity: 40 centistokes max
 Mounting: any position
 Weight (including coil): 280 g
 Opening & Closing time: 20mSec Max



2/2 Brass

N/CLOSED

2 WAY DIRECT ACTING


TYPE 20011



PRESSURE

Ø Port	Ø Orifice (mm)	Flow Rate Cv Ltr/min	Pressure Rating (bar) Max ΔP			Seals	Max Media Temp °C	Part Number	List Price	
			Min ΔP	AC 10 watt Coil	DC 10 watt Coil					DC 18 watt Coil
8/100 or 10/100 or 1/8 BSP or 1/4 BSP	1.2	0.7	0	100	90	100	NBR EPDM FKM	60 100 100	2121110 + port + voltage + coil size 2121130 + port + voltage + coil size 2121120 + port + voltage + coil size	£46.13
	1.6	1.4	0	90	35	90	NBR EPDM FKM	60 100 100	2161110 + port + voltage + coil size 2161130 + port + voltage + coil size 2161120 + port + voltage + coil size	
	2	2.0	0	48	18	80	NBR EPDM FKM	60 100 100	2201110 + port + voltage + coil size 2201130 + port + voltage + coil size 2201120 + port + voltage + coil size	
	2.4	2.8	0	27	10	35	NBR EPDM FKM	60 100 100	2241110 + port + voltage + coil size 2241130 + port + voltage + coil size 2241120 + port + voltage + coil size	
	3	4	0	22	9	30	NBR EPDM FKM	60 100 100	2301110 + port + voltage + coil size 2301130 + port + voltage + coil size 2301120 + port + voltage + coil size	
1/4 BSP	4	5.5	0	13	1.2	9	NBR EPDM FKM	60 100 100	2401110 + 0141 + voltage + coil size 2401130 + 0141 + voltage + coil size 2401120 + 0141 + voltage + coil size	
	5	7.2	0	4	0.8	5	NBR EPDM FKM	60 100 100	2501110 + 0141 + voltage + coil size 2501130 + 0141 + voltage + coil size 2501120 + 0141 + voltage + coil size	
	7	11	0	0.9	-	1.5	NBR EPDM FKM	60 100 100	2701110 + 0141 + voltage + coil size 2701130 + 0141 + voltage + coil size 2701120 + 0141 + voltage + coil size	

OPTIONS

Connector PG9 – DIN 43650 A IP65 coil Flow control 2mm – 4mm Manual Over ride up to 4mm orifice Explosion Proof Enclosure ATEX II 2 G/D EexdIICT6, IP65 85°C (Ambient T° from -20°C to +40°C)  High power 18 – 20 watt coil (higher DC pressure ratings)	Included Included +£10.28 +£5.15 +£199.33 +£5.27
--	---

ELECTRICAL DATA

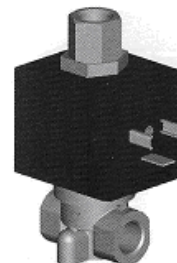
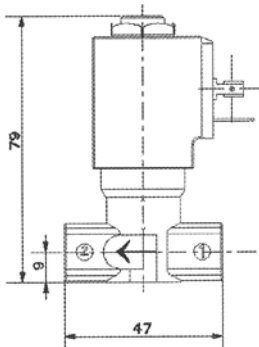
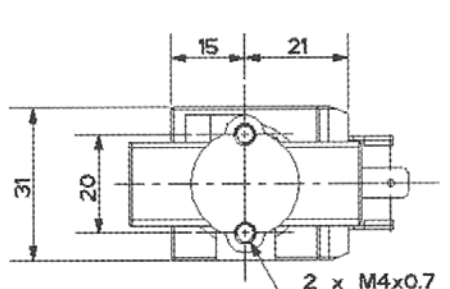
Voltage (-10% + 15%) Continuous duty 100%	Coil Size	Power		Insulation class	Enclosure	Electrical connections
		Inrush	Holding			
~ 24 - 48 - 110 - 230 (50 or 60 Hz)	30	26 VA	14 VA	F 155°C	IP 65 with connector	3 spades DIN 43650A DIN 40050 VDE 0110
= 12 - 24 - 48 (DC)		10 Watts				
	36	14 - 20 Watts				

CONSTRUCTION

Body: Brass
 Tube and internal parts: Stainless steel
 Seals and gaskets: NBR (Optional EPDM or FKM)
 Moulded coil: Resin

REPAIR KIT

Coil	Coil size (30 or 36) + voltage
Complete plunger + O' rings	KIT + valve part number



N/Open
 200
 BAR
 Page 21