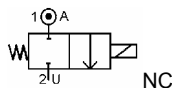


Media: air – water – gas – light oil - vacuum
 Pressure range: 0 to 10 bar max
 Media temperature: 120° C max
 Ambient temperature: -10° to +50° C max
 Media viscosity: 50 centistokes max
 Mounting: any position
 Opening / Closing time: 20 mSec Max



2/2 Stainless

N/CLOSED

2 WAY DIRECT ACTING

TYPE ADS812



PRESSURE

Ø Port	Ø Orifice (mm)	Coil Size	Flow Rate	Pressure Rating (bar)			Seals	Max Media Temp °C	Part Number	List Price				
			Cv Ltr/min	Min ΔP	Max ΔP AC	Max ΔP DC								
1/4 BSP	3.0	WPA1	4	0	10	7	NBR SILICONE EPDM FKM PTFE	80°C - 120°C	ADS8A + seal + voltage	£79.34				
	4.0		5.5	0	7	5			ADS8B + seal + voltage					
	5.0		7.2	0	5	3.5			ADS8C + seal + voltage					
3/8 BSP	4.0	WPA2	5.5	0	10	7			NBR SILICONE EPDM FKM PTFE	80°C - 120°C	ADS10A + seal + voltage	£117.37		
	6.0		10.5	0	5	3.5					ADS10B + seal + voltage			
	8.0		16.2	0	2	1.4					ADS10C + seal + voltage			
1/2 BSP	6.0	WPA2	10.5	0	5	3.5					NBR SILICONE EPDM FKM PTFE	80°C - 120°C	ADS12A + seal + voltage	£126.90
	8.0		16.2	0	2	1.4							ADS12B + seal + voltage	

OPTIONS

Connector PG9 – DIN 43650 A IP65 coil Explosion Proof WPA2 Coil: EExmII T4 ATEX IIG IP65 T 130°C (Optional T6 T 85°C) High temp N Rated coil 200°C Silver shading ring		Included Included +£80.38 +£20.66 +£26.91
--	--	---

ELECTRICAL DATA

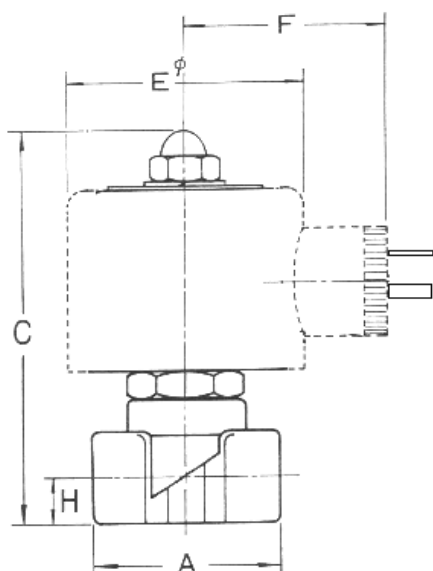
Voltage (-10% + 15%) Continuous duty 100%	Coil Size	Power		Insulation class	Enclosure	Electrical connections
		Inrush	Holding			
~ 24 - 110 - 230 (50 or 60 Hz)	WPA1	28VA	15.4VA	H 180°C	IP 65 with connector	3 spades DIN 43650A DIN 40050 VDE 0110
= 12 - 24 (DC)		12 WATTS				
~ 24 - 110 - 230 (50 or 60 Hz)	WPA2	40VA	24.2VA			
= 12 - 24 (DC)		18 WATTS				

CONSTRUCTION

Body: Forged 316 stainless steel (CF8M)
 Tube 304 stainless steel, armature 430F stainless steel
 Shading ring: copper
 Seals and gaskets: FKM (Optional EPDM or NBR or SILICONE or PTFE)
 Moulded coil: Resin

REPAIR KIT

Coil	Coil size (WPA1 OR WPA2) + voltage
Core tube & armature assembly	SP209+210 + valve part number



Model	A	B	C	D / E	F*	G	H	Kg
ADS 8	41	85	86	56	63	15	10.5	0.47
ADS 10	50	90	90	58	65	15	11.7	0.73
ADS 12	55	91	91	58	65	TBA	13	0.78

< Includes Connector

