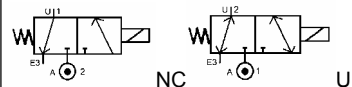


Media: air – vacuum – water – light oil
 Pressure range: 0 to 20 bar max
 Media temperature: -10° to +100° Max
 Ambient temperature: -10° to +50°C
 Media viscosity: 40 centistokes max
 Mounting: Any position
 Weight: 400g
 Opening or Closing time: 20 mSec Max

3/2 Brass

N/Closed & Universal 3 WAY DIRECT ACTING

TYPE 30043



PRESSURE

Ø Port	Ø Orifice (mm)	Flow Rate Cv Ltr/ min			Pressure Rating (bar)			Seals Temp °C	Part Number	List Price
		A 1	1→2	E 3	Min ΔP	Max ΔP 10W	Max ΔP 14W			
		E 3	2→3							
1/4 BSP N/Closed	1.2	1.0			0	18	20	NBR 60°C EPDM 100°C FKM 100°C	31243 + seal + 0141 + voltage	£100.82
	2.0	1.7							32043 + seal + 0141 + voltage	
	2.0	2.1							33043 + seal + 0141 + voltage	
	2.4	2.2		0	10	15			34043 + seal + 0141 + voltage	
	3.0	4.0		0	6	10			35043 + seal + 0141 + voltage	
	3.0	4.0								
	4.0	6.0		0	3	5				
	5.0	7.5		0	1	3				
1/4 BSP Universal	1.2	1.0			0	8	14	NBR 60°C EPDM 100°C FKM 100°C	31247 + seal + 0142 + voltage	£102.70
	2.0	1.7							31647 + seal + 0142 + voltage	
	1.6	1.3		0	7	10			32047 + seal + 0142 + voltage	
	1.6	1.3							33047 + seal + 0142 + voltage	
	2.0	2.1		0	6	8			34047 + seal + 0142 + voltage	
	2.4	2.2								
	3.0	4.0		0	2	4				
	3.0	4.0								
	4.0	6.0		0	0.6	1.5				
	5.0	7.5		0	0.2	0.5				
5.0	8.0									
5.0	8.0									

OPTIONS

Connector PG9 – DIN 43650 A
 IP65 Coil
 NPT Thread
 Manual Over Ride
 High Power 14 – 20 Watt coil

Included
 Included
 + £22.55
 +10%
 +£5.27

ELECTRICAL DATA

Voltage (-10% + 10%) Continuous duty 100%	Coil Size	Power		Insulation class	Enclosure	Electrical connections
		Inrush	Holding			
~ 24 - 48 - 110 - 230 - 380 (50 or 60 Hz)	30	26VA	14VA	F 155°C	IP 65 with connector	3 spades DIN 43650 DIN 40050 VDE 0110
= 12 - 24 - 48 (DC)		10 Watts				
~ 24 - 48 - 110 - 230 - 380 (50 or 60 Hz)	36	48VA	26VA			
= 12 - 24 - 48 (DC)		14 – 20 Watts				

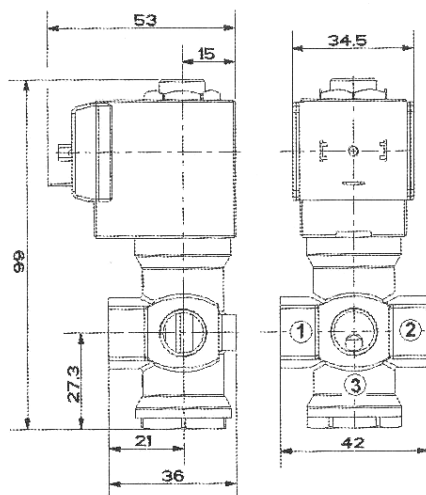
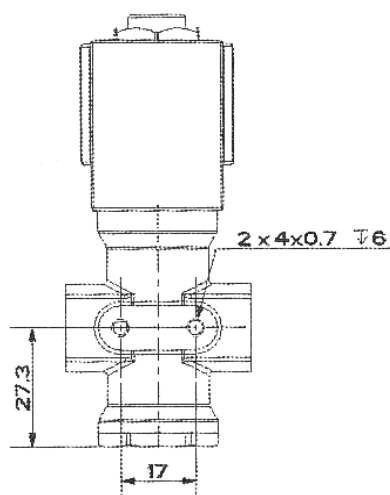
CONSTRUCTION

Body: Brass
 Tube and internal parts: Stainless steel
 Seals and gaskets: NBR (Optional EPDM & FKM)
 Moulded coil: Resin

REPAIR KIT

Coil	Coil size (30 or 36) + voltage
Complete plunger + O' rings	KIT + valve part number

OVERALL DIMENSIONS



3/2
 25 BAR
 RH
 Page 33