

GENERAL CHARACTERISTICS

Manifold for single or multiple circuits. With integrated needle valve for manual flow control.

Female thread G1/2 up tp G3/4 aluminium/brass/stainless steel

Combination with the following flowmeters

- NJ-...W... - product information 1.2.NJ.
- NJV-...W... - product information 1.2.NJV.
- VO-...W... - product information 1.2.VO.
- VL-...W... - product information 2.3.VL.



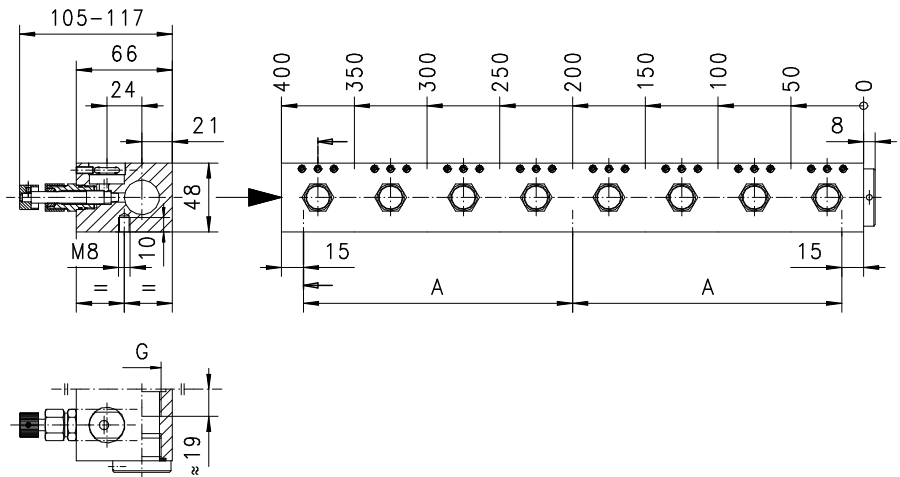
**VB-020GA3
mit NJV-015WM**

TECHNICAL DATA

| Valve port | length mm (without plug) | number of fixing holes | A mm | weight kg (aluminium) |
|------------|-----------------------------|------------------------|---------|--------------------------|
| 1 | 50 | 2 | - | 0.6 |
| 2 | 100 | 2 | - | 1.1 |
| 3 | 150 | 2 | - | 1.6 |
| 4 | 200 | 2 | - | 2.1 |
| 5 | 250 | 2 | - | 2.4 |
| 6 | 300 | 3 | 135 | 3.0 |
| 7 | 350 | 3 | 160 | 3.4 |
| 8 | 400 | 3 | 185 | 3.8 |

pressure PN 25 bar
media temperature max. 110°C

Attention! Observe nominal pressure and temperature of individual flow meters intalled!



MATERIALS

VB-...GA
housing aluminium anodized
seal NBR
wetted parts brass, brass nickel plated
external parts Al, brass nickel plated

NOMENCLATURE

| VB- | 020 | G | A | 1 | basic type specification |
|-----|-----|---|---|---|---|
| | 015 | | | | ○ nominal diameter DN15 - G1/2 |
| | 020 | | | | ● nominal diameter DN20 - G3/4 |
| | | G | | | ● female thread |
| | | | A | | ● aluminium |
| | | | K | | □ stainless steel (wetted parts and housing 1.4305) |
| | | | M | | □ brass (housing Ms58 nickel plated) |
| | | | | 1 | ● 1-fold port |
| | | | | 2 | ● 2-fold port |
| | | | | 3 | ● 3-fold port |
| | | | | 4 | ● 4-fold port |
| | | | | 5 | ● 5-fold port |
| | | | | 6 | ● 6-fold port |
| | | | | 7 | ● 7-fold port |
| | | | | 8 | ● 8-fold port |

All technical changes reserved

●BASIC Standard ○BASIC Programme option □VARIO Special option ⊕ PLUS Accessories ✗ not recommendable